

## NX-5700/5800

NEXEDGE VHF/UHF MOBILE RADIOS

**NXDN™**

**DMR**



**DMR T3**  
-based  
TRUNKING

**DMR >>>>**  
Auto Slot  
Select >>>>



**GPS**

**FleetSync®**

**5-tone**

### FEATURE HIGHLIGHTS

- **Multi-Digital** operation in NXDN, DMR and P25 (Phases 1 & 2) protocols
- **Any combination of two digital protocols** can be selected from NXDN, DMR, and P25
- **Mixed Digital & FM Analog Operation** allows intelligent migration in mixed sites and easy migration with digital radios in other sites
- **Large, Color 2.55" (154 x 422 pixels) TFT Display** for at-a-glance operational status checking
- **Easy to follow GUI** and **Multi-line Text** to convey more information
- **Dual Remote Control Head and Multi-Band (Multi RF Deck) Control** Option providing scalable configurations for various operations and applications
- **Built-in GPS Receiver with Optional GPS Active Antenna (KRA-40G)** for effective fleet management
- **Bluetooth® Module built-in** for hands-free operation
- Renowned KENWOOD Audio Quality can be achieved with **Active Noise Reduction (ANR)** that utilizes built-in DSP for suppression of ambient noise
- Built-in **56-bit DES Encryption**
- Optional **256-bit AES Encryption**
- **microSD/SDHC\* Memory Card Slot** (\*Up to 2GB/32GB)
- **IP54/55** and **MIL-STD-810 C/D/E/F/G**

### GENERAL FEATURES

- 25 W to 5 W (136-174 MHz) Model
- 25 W to 5 W (400-470 MHz) Model
- Maximum of 4,000 CH/Radio capacity, 512 CH/Zone, 128 Zones
- DB-25 Accessory Connector
- AMBE+2™ Enhanced Vocoder
- 4 W Speaker Audio

### DIGITAL – NXDN MODE

- Gen2 & NXDN Type-C Trunked Operation
- NXDN Conventional Operation
- 6.25 & 12.5 kHz Channel Spacing
- Over-the-Air Alias
- Over-the-Air Programming
- Paging Call
- Emergency Call
- All Group Call
- Status Messaging
- Remote Stun/Kill
- Remote Check
- Short & Long Data Messages
- NXDN Digital Scrambler Included

### DIGITAL – DMR MODE

- DMR Tier III Trunking
- DMR Tier II conventional
- DMR Auto Slot Select
- Site Roaming
- Two-slot TDMA in 12.5kHz channels
- Call Interruption
- Dual-slot Direct Mode
- Energy Efficient

### DIGITAL – P25 MODE

- P25 Phase 1 Conventional/Trunked Operation
- P25 Phase 2 Trunked Operation
- Talk Group ID Lists / Individual ID Lists
- Caller ID Display
- Remote Monitor / Remote Check
- Radio Inhibit
- Encryption Key Zeroize & Retention
- P25 Enhanced Encryption (ARC4)
- P25 Over-the-Air Re-keying
- P25 Over-the-Air Programming

### ANALOG – FM MODE

- Conventional & LTR Zones
- FleetSync®/II: PTT ID ANI / Caller ID Display, Selective / Group Call, Emergency Status / Text Messages
- MDC-1200: PTT ID ANI / Caller ID Display, Emergency, Radio Check / Inhibit
- QT / DQT & 5-Tone

### MULTIPLE CONFIGURATIONS

The NX-5000 mobile series allows users to create a variety of configurations to suit different requirements by combining different options. Some of the standard configurations are:

- Single Remote Control Head x Single RF Deck
- Dual Remote Control Heads x Single RF Deck
- Dual Remote Control Heads x Multi RF Decks
- Other combinations are available. Consult your local KENWOOD dealer for more.



## OPTIONAL ACCESSORIES

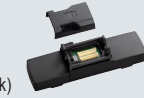
- **KCH-19**  
BASIC CONTROL HEAD KIT



- **KCH-20R**  
FEATURED CONTROL HEAD



- **KRK-15B**  
CONTROL HEAD REMOTE KIT (Adapter for the RF Deck)



- **KRK-14H**  
CONTROL HEAD INTERFACE KIT (Adapter for the Head)



- **KCT-71**  
REMOTE CONTROL CABLE (Available in 3 lengths of 5.2 m, 7.6 m, and 0.5 m)



- **KWD-AE31**  
SECURE CRYPTOGRAPHIC MODULE

- **KMC-35**  
MICROPHONE



- **KMC-36**  
KEYPAD MICROPHONE



- **KCT-73MIC**  
EXTERNAL MIC KIT (Cable length: 3 m)



- **KCT-74PTT**  
EXTERNAL PTT KIT (Cable length: 3 m)



- **KES-3**  
EXTERNAL SPEAKER (Compact low profile; ø3.5 mm plug)



- **KES-5**  
EXTERNAL SPEAKER (40 W max input, Requires KAP-2)



- **KCT-23**  
DC POWER CABLE (M: 3m / M3: 7m)



- **KCT-46**  
IGNITION SENSE CABLE



- **KLF-2**  
LINE FILTER



- **KMB-10**  
KEY LOCK ADAPTER



- **KAP-2**  
HORN ALERT/P.A. RELAY UNIT



- **KRA-40G**  
GPS ACTIVE ANTENNA



- **KPG-180AP**  
OTAP MANAGER

All accessories and options may not be available in all markets. Contact an authorized KENWOOD dealer for details and complete list of all accessories and options.

## SPECIFICATIONS

		Mobile Radios	
GENERAL		NX-5700	NX-5800
Frequency Range		136-174 MHz	400-470 MHz
Max. Channels Per Radio		1024 (Up to 4000 channels with option)	
Number of Zones		128	
Max. Channels Per Zone		512	
Channel Spacing	Analog	12.5 / 20 / 25 kHz	
	Digital	6.25 / 12.5 kHz	
Power Supply		13.2 V DC (10.8 - 15.6 V DC)	
Current Drain	Standby	0.45 A	
	RX	2.3 A	
	TX	9 A	
Operating Temperature		-30 °C to +60 °C	
Frequency Stability (-30°C to +60°C; +25°C Ref.)		±0.5 ppm	
Dimensions (W x H x D) Radio with Control Head		171 x 48 x 176 mm	
Weight: Radio with Control Head		1.6 kg	
Applicable Standards	ETSI (EMC)	EN 301 489-3, EN 301 489-5, EN 301 489-17	
	ETSI (Spectrum)	EN 300 086, EN 300 113, EN 300 219, EN 300 328, EN 300 440, EN 301 166	
	ETSI Safety	EN 60065, EN 60215, EN 60950-1	

Specifications are measured according to applicable standards, and subject to change without notice, due to advancements in technology.

		Mobile Radios	
RECEIVER		NX-5700	NX-5800
Sensitivity (Digital)	NXDN 3 % BER (6.25 kHz / 12.5 kHz)	0.25 µV / 0.32 µV	
	NXDN 1 % BER (6.25 kHz / 12.5 kHz)	-4 dB µV (0.32 µV) / -1 dB µV (0.45 µV)	
	DMR 5 % BER	0.3 µV (-117.5 dBm)	
	DMR 1 % BER	0.45 µV (-114 dBm)	
Sensitivity (Analog)	P25 5 % BER	0.28 µV	
	12 dB SINAD (12.5 / 20&25 kHz)	0.32 µV / 0.28 µV	
Selectivity	20 dB SINAD (12.5 / 20&25 kHz)	-1 dB µV (0.45 µV) / -3 dB µV (0.35 µV)	
	Analog 12.5 kHz	70 dB	
	Analog 20 kHz	78 dB	
Intermodulation (Analog)	Analog 25 kHz	80 dB	
		70 dB	
Spurious Rejection (Analog)		80 dB	
Audio Distortion		2 %	
Audio Output Power		4 W / 4 Ω (Remote Control Head: 3 W / 4 Ω)	
TRANSMITTER		NX-5700	NX-5800
RF Power Output Power		25 to 5 W	
Spurious Emission		-36 dBm ≤ 1 GHz, -30 dBm > 1 GHz	
FM Hum & Noise (Analog): @25 / 20 / 12.5 kHz		50 / 50 / 45 dB	
Audio Distortion		2 %	
Emission Designator		16K0F3E, 14K0F2D, 14K0F3E, 12K0F2D, 11K0F3E, 8K50F3E, 7K50F2D, 8K30F1E, 8K30F1D, 8K30F7W, 8K10F1E, 8K10F1D, 8K10F1W, 7K60FXE, 7K60FXD, 4K00F1E, 4K00F1D, 4K00F7W, 4K00F2D	

## APPLICABLE MIL-STD & IP\*1

MIL Standard	810C Methods/ Procedures	810D Methods/ Procedures	810E Methods/ Procedures	810F Methods/ Procedures	810G Methods/ Procedures
Low Pressure	500.1/ I	500.2/ I, II	500.3/ I, II	500.4/ I, II	500.5/ I, II
High Temperature	501.1/ I, II	501.2/ I, II	501.3/ I, II	501.4/ I, II	501.5/ I, II
Low Temperature	502.1/ I	502.2/ I, II	502.3/ I, II	502.4/ I, II	502.5/ I, II
Temperature Shock	503.1/ I	503.2/ I	503.3/ I	503.4/ I, II	503.5/ I
Solar Radiation	505.1/ I	505.2/ I	505.3/ I	505.4/ I	505.5/ I
Rain	506.1/ I, II	506.2/ I, II	506.3/ I, II	506.4/ I, III	506.5/ I, III
Humidity	507.1/ I, II	507.2/ II, III	507.3/ II, III	507.4	507.5/ II
Salt Fog	509.1/ I	509.2/ I	509.3/ I	509.4	509.5
Dust	510.1/ I	510.2/ I	510.3/ I	510.4/ I, III	510.5/ I
Vibration	514.2/ VIII, X	514.3/ I	514.4/ I	514.5/ I	514.6/ I
Shock	516.2/ I, II, V	516.3/ I, IV, V	516.4/ I, IV, V	516.5/ I, IV, V	516.6/ I, IV, V
International Protection Standard					
Dust & Water			IP54, IP55*1		

\*1 All interfaces must be fully sealed with appropriate covers or by designated genuine accessories.

- The Bluetooth word mark and logos are registered trademarks owned by the Bluetooth SIG, Inc. • SD and microSD are trademarks of SD-3C, LLC in the United States, and/or other countries
- AMBE+2™ is a trademark of Digital Voice Systems Inc. • Windows® is a registered trademark of Microsoft Corporation. • NXDN™ is a trademark of JVCKENWOOD Corporation and Icom Inc.
- NEXEDGE® is a registered trademark of JVCKENWOOD Corporation. • FleetSync® is a registered trademark of JVCKENWOOD Corporation.

## JVCKENWOOD U.K. Limited

First Floor, Gleneagles, The Belfry, Colonial Way, Watford, Hertfordshire WD24 4WH, United Kingdom  
<https://kenwoodcommunications.co.uk/comm/>

KENWOOD Communications  
Global Website



comms.kenwood.com



ISO9001 Registered  
Communications Systems Division  
JVCKENWOOD Corporation

CL855E-E-2R2\_230707i